



# **Pac-Seal® ASP** **Advanced Stationary Pusher Seals**

For gear- and belt-driven, heavy-duty  
engine coolant pumps



*Experience In Motion*

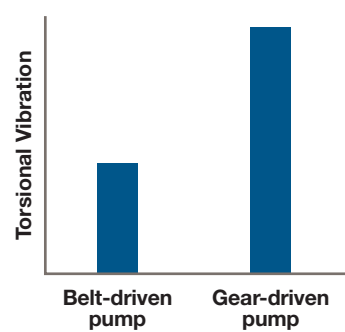




# Beat vibration without breaking the bank

Engine coolant pumps — especially those in diesel engines — can take a toll on seals. The inherent torsional shaft vibration accelerates wear on seal components.

Whether your coolant pump is belt- or gear-driven, Pac-Seal ASP seals from Flowserve are built to withstand the vibration without breaking the bank.



## Fit for purpose

Pac-Seal ASP seals are stationary O-ring pusher seals. They are energized by a wave spring with seal faces directly driven through the shell and sleeve elements.

And they're fit for purpose. With two ASP seal models available for belt- or gear-driven pumps, you get everything you need for your application and nothing you don't. But rest assured that quality is never compromised. Every component has been designed and rigorously tested to ensure:

- Superior performance
- Increased reliability
- Extended service life
- Minimal emissions
- Simple installation and maintenance

The result is a low total cost seal family that meets your operational and warranty needs.

## Two models for maximum value

### Engineered for value and performance

- High-performance materials improve thermal conductivity and reduce the effects of seal face-generated heat to improve seal life and dry-running capability.
- A fully unitized design ensures trouble-free installation and easy maintenance.
- Improved mechanical drive with drive-lug system different from other seal designs
- Standard O-ring gaskets increase versatility for higher-performance elastomers while reducing cost.
- A wave spring for reduced axial space addresses fitment in smaller pumps, while providing adequate face loading to minimize leakage.

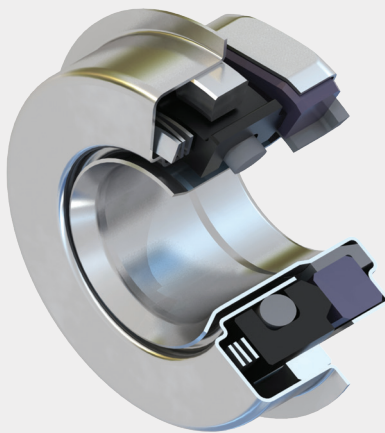
### Wide-ranging applications

Designed specifically for diesel engine coolant pumps, Pac-Seal ASP seals are used in vehicles and equipment employed by a wide range of industries, including:

- Automotive
- On- and off-highway
- Locomotive
- Agricultural
- Mining
- Marine
- Generators

### Operating parameters

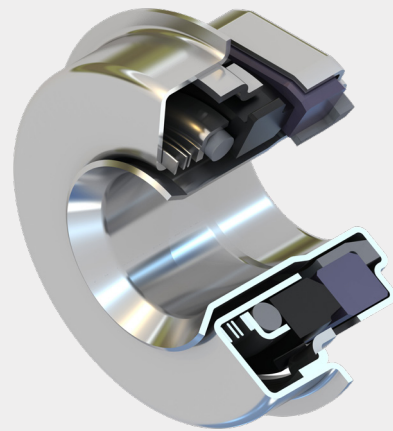
- Pressures to 5 bar (75 psi)
- Temperatures from -40°C to 205°C (-40°F to 400°F)
- Speeds to 25 m/s (82 fps)



### ASP seal for gear-driven coolant pumps

The ASP seal has been proven to withstand the severe conditions of gear-driven engine coolant pumps.

- Robust drive lugs extend seal life in high torsional vibration applications.
- A captured O-ring design improves sealing for gear-driven applications.
- Increased cross-sections of secondary gaskets improve resistance to elastomer fatigue and tears common in other seal designs.



### ASP-X seal for belt-driven coolant pumps

The ASP-X seal has been optimized for belt-driven engine coolant pumps, while improving performance unmatched by other seal designs.

- Drive feature at the outer diameter (OD) of the stationary face is optimized for lower vibration requirements.
- Face geometry is optimized for lower-vibration applications, while ensuring performance.
- The O-ring gasket and retaining element provide the same pressure capability as the ASP seal.

## Design options

ASP seals are available in multiple sizes and materials. Custom designs are also available to provide the best sealing solution to meet your needs.

### Seal face options

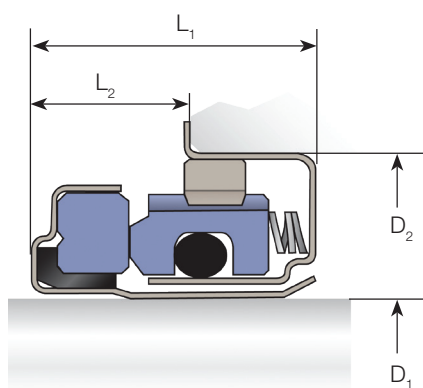
- Carbon
- Graphite-loaded silicon carbide
- Self-sintered silicon carbide
- Aluminum oxide

### Elastomer options

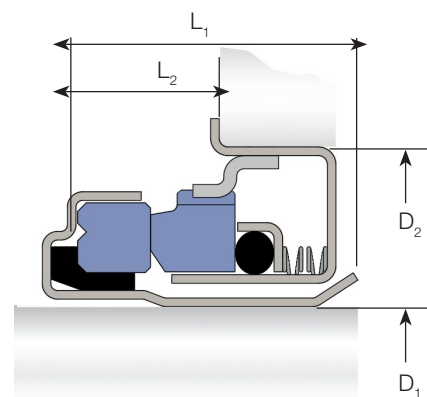
- NBR
- HNBR
- FKM
- EPDM

## Sample sizes and dimensions

$D_1$	$D_2$	$L_1$	$L_2$
12 mm	30 mm	18.2 mm	10.2 mm
16 mm	36.5 mm	20.5 mm	12 mm
0.625 in.	1.435 in.	0.795 in.	0.445 in.
0.750 in.	1.575 in.	0.795 in.	0.445 in.
1.000 in.	2.000 in.	0.923 in.	0.415 in.
1.250 in.	2.480 in.	1.280 in.	0.696 in.



ASP seal for gear-driven pumps



ASP-X seal for belt-driven pumps

### Headquarters

Flowserve Corporation  
5215 North O'Connor Blvd.  
Suite 700  
Irving, Texas 75039-5421 USA  
Telephone: +1 937 890 5839

### USA and Canada

Kalamazoo, Michigan USA  
Telephone: +1 269 381 2650

### Europe, Middle East, Africa

Etten-Leur, The Netherlands  
Telephone: +31 765 028 200

### Asia Pacific

Singapore  
Telephone: +65 6544 6800

### Latin America

Mexico City  
Telephone: +52 55 5567 7170

SSFLY000260-01 (EN/A4) February 2022

Flowserve Corporation has established industry leadership in the design and manufacture of its products. When properly selected, this Flowserve product is designed to perform its intended function safely during its useful life. However, the purchaser or user of Flowserve products should be aware that Flowserve products might be used in numerous applications under a wide variety of industrial service conditions. Although Flowserve can provide general guidelines, it cannot provide specific data and warnings for all possible applications. The purchaser/user must therefore assume the ultimate responsibility for the proper sizing and selection, installation, operation, and maintenance of Flowserve products. The purchaser/user should read and understand the Installation Instructions included with the product, and train its employees and contractors in the safe use of Flowserve products in connection with the specific application.

While the information and specifications contained in this literature are believed to be accurate, they are supplied for informative purposes only and should not be considered certified or as a guarantee of satisfactory results by reliance thereon. Nothing contained herein is to be construed as a warranty or guarantee, express or implied, regarding any matter with respect to this product. Because Flowserve is continually improving and upgrading its product design, the specifications, dimensions and information contained herein are subject to change without notice. Should any question arise concerning these provisions, the purchaser/user should contact Flowserve Corporation at any one of its worldwide operations or offices.

©2022 Flowserve Corporation. All rights reserved. This document contains registered and unregistered trademarks of Flowserve Corporation. Other company, product, or service names may be trademarks or service marks of their respective companies.