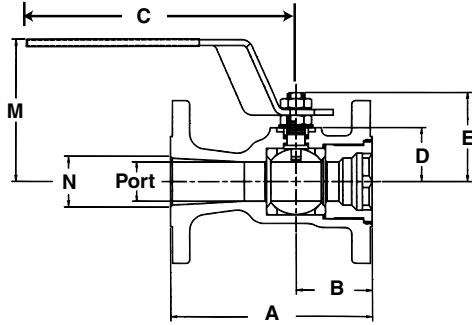
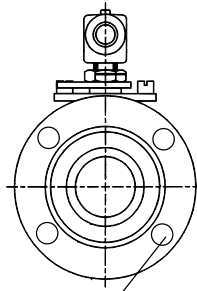


1/2"-10" Series 51/52
 1/2" - 8" Series AF 51/52, 1/2" - 4" Series CL 51/52
 3" - 6" Series CN 51, 1/2" - 6" Series FZ, PT, W 51/52

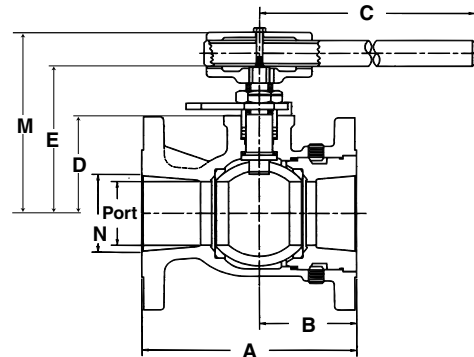


1-1/2" - 2"

Threaded End Plug Retention



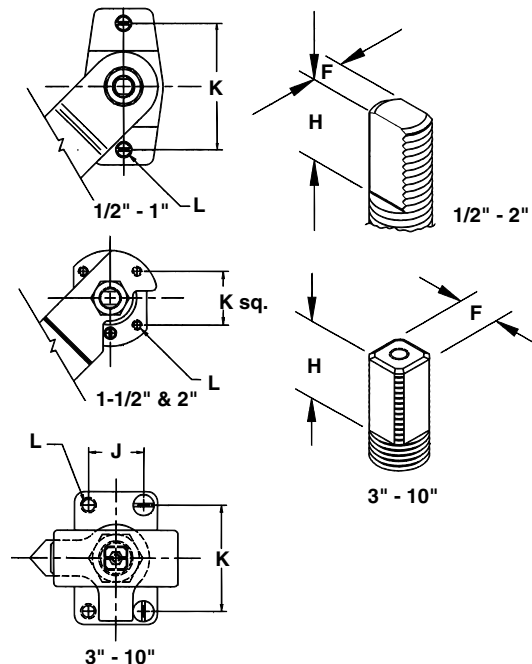
Bolting dimensions to ANSI B16.34



3" - 10"

Valve Size	Port	51 A	52 A	51 B	52 B	C	D	E	M	N	Weight Lbs. (kg)		
												51/52	
1/2"	.44 (11.2)	4.25 (108.0)	5.50 (139.7)	1.81 (46.0)	2.31 (58.7)	5.53 (140)	.94 (23.9)	1.55 (39.4)	2.88 (73.2)	.59 (15.0)	4.5 (2.0)	5.5 (2.5)	
3/4"	.56 (14.2)	4.62 (117.4)	6.00 (152.4)	1.94 (49.3)	2.44 (62.0)	5.53 (140)	1.03 (26.2)	1.64 (41.7)	2.98 (75.7)	.83 (21.1)	6.6 (3.0)	7.5 (3.4)	
1"	.81 (20.1)	5.00 (127.0)	6.50 (165.1)	2.25 (57.1)	2.75 (70.0)	6.53 (165)	1.27 (32.3)	2.19 (55.6)	3.40 (86.4)	1.05 (26.7)	7.9 (3.6)	9.5 (4.3)	
1-1/2"	1.25 (31.8)	6.50 (165.0)	7.50 (109.5)	2.45 (62.2)	2.95 (74.9)	8.10 (205)	1.73 (43.9)	2.88 (73.1)	4.58 (116)	1.63 (41.4)	13.0 (5.9)	16.1 (7.3)	
2"	1.50 (38.1)	7.00 (178.0)	8.50 (215.9)	2.67 (67.8)	3.17 (80.5)	8.10 (205)	1.92 (48.8)	3.06 (77.8)	4.77 (121)	2.01 (51.1)	18.1 (8.2)	22.1 (10.0)	
3"	2.50 (63.5)	8.00 (203.2)	11.12 (282.6)	3.62 (92.0)	3.62 (92.0)	22.0 (558)	3.88 (98.6)	5.69 (145)	7.22 (183)	3.06 (77.7)	39.5 (17.9)	50 (22.7)	
4"	3.25 (82.6)	9.00 (228.6)	12.00 (304.8)	4.00 (102)	4.00 (102)	22.0 (558)	4.48 (113)	6.31 (160)	7.84 (199)	4.03 (102)	62 (28.1)	80 (36.3)	
6"	4.38 (111.3)	10.50 (266.7)	15.88 (403.3)	4.25 (108.0)	4.25 (108.0)	26.0 (660)	6.19 (157)	8.96 (228)	11.21 (285)	6.06 (153)	125 (56.7)	150 (68.0)	
8"	5.69 (144.5)	11.50 (292.0)	16.50 (419.1)	5.69 (145)	5.69 (145)	26.0 (660)	7.28 (184)	10.05 (255)	12.31 (312)	8.00 (203)	184 (83.5)	225 (102)	
10"	7.38 (187.5)	13.00 (330.2)	18.00 (457.0)	7.12 (181)	7.12 (181)	—	9.28 (236)	12.76 (324)	—	10.00 (254)	310 (139)	490 (220)	

Valve Size	F	H	J	K	L
1/2"	.217 (5.51)	.28 (7.11)	—	1.89 (48.0)	1/4 - 20
3/4"	.217 (5.51)	.28 (7.11)	—	2.13 (54.1)	1/4 - 20
1"	.296 (7.52)	.43 (10.92)	—	2.50 (63.5)	1/4 - 20
1-1/2"	.343 (8.71)	.61 (15.5)	—	1.39 (35.3)	1/4 - 20
2"	.343 (8.71)	.60 (15.2)	—	1.39 (35.3)	1/4 - 20
3"	.745 (18.9)	.653 (16.6)	1.75 (44.45)	3.38 (85.8)	M10
4"	.745 (18.9)	.653 (16.6)	1.75 (44.45)	3.38 (85.8)	M10
6"	1.120 (28.4)	1.031 (26.2)	3.00 (76.2)	4.00 (101)	M12
8"	1.120 (28.4)	1.031 (26.2)	3.00 (76.2)	4.00 (101)	M12
10"	1.375 (34.9)	1.252 (31.8)	2.25 (57.15)	8.25 (209.5)	5/8 - 11

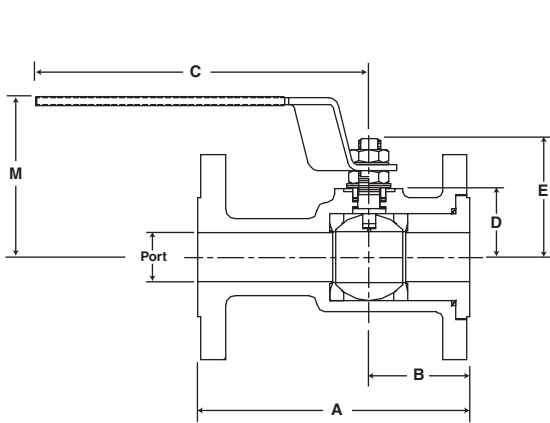


Dimensions are for layout purposes only. For tolerances, contact Worcester Controls. Metric dimensions are converted from standard English.

ENGINEERING DATA AND VALVE DIMENSIONS

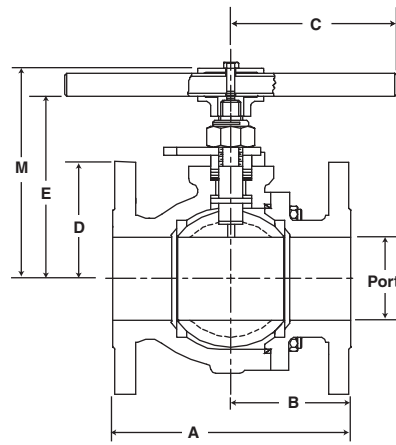
1/2" - 1-1/2", 2-1/2" & 10" Series 82/83 Flanged Full Port Ball Valves

1/2" - 1-1/2", 2-1/2" & 10" Series AF 82/83 Flanged Full Port Ball Valves



1/2" - 1-1/2"

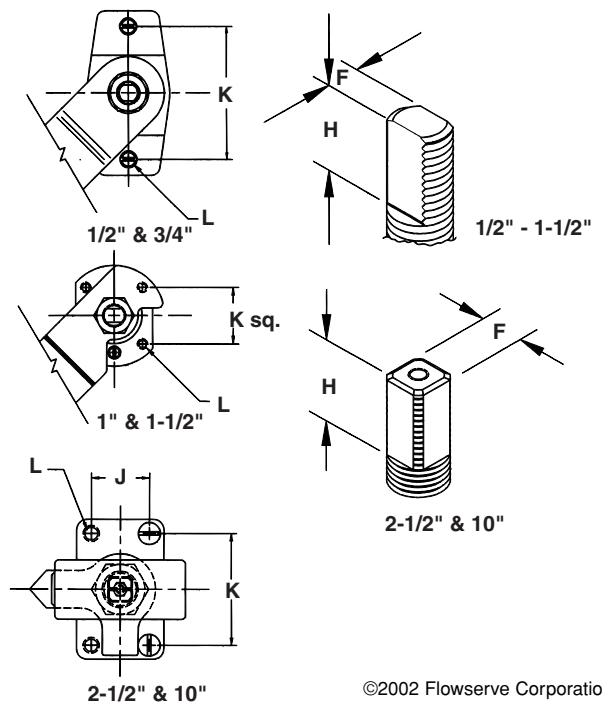
Threaded End Plug Retention



2-1/2" & 10"

Valve Size	Port	82 A	83 A	82 B	83 B	C	D	E	M	Weight Lbs. 82/83(kg)
1/2"	.56 (14.2)	4.25 (108)	5.50 (140)	1.81 (46.0)	1.81 (46.0)	5.53 (141)	1.03 (26.2)	1.64 (41.7)	2.98 (75.7)	5.5 (2.5)
3/4"	.81 (20.6)	4.62 (117)	6.00 (152)	2.31 (5.86)	2.31 (5.86)	6.53 (166)	1.27 (32.3)	2.19 (55.6)	3.40 (86.4)	7.5 (3.4)
1"	1.0 (25.4)	5.00 (127)	6.50 (165)	2.56 (63.5)	2.56 (63.5)	6.31 (160)	1.46 (37.1)	2.38 (60.5)	3.78 (96.0)	9.5 (4.3)
1-1/2"	1.5 (38.1)	6.50 (165)	7.50 (191)	2.74 (69.6)	2.74 (69.6)	8.10 (206)	1.92 (48.8)	3.06 (77.7)	4.77 (121)	18 (2.8)
2-1/2"	2.5 (63.5)	7.50 (191)	9.50 (241)	3.54 (89.9)	3.67 (93.2)	24.00 (610)	3.86 (98.0)	5.67 (144)	7.20 (183)	70 (32)
10"	10.0 (254)	21.00 (533)	22.37 (568)	10.52 (267)	11.22 (284)	-	12.13 (308)	15.50 (394)	-	792 (360)

Valve Size	F	H	J	K	L
1/2"	.22 (5.59)	.28 (7.11)	-	2.13 (54.1)	1/4"-20
3/4"	.30 (7.6)	.43 (10.9)	-	2.50 (63.5)	1/4"-20
1"	.30 (7.62)	.43 (10.9)	-	1.17 (29.7)	1/4"-20
1-1/2"	.34 (8.64)	.60 (15.2)	-	1.39 (35.3)	1/4"-20
2-1/2"	.75 (19.1)	.65 (16.5)	1.75 (44.5)	3.38 (85.9)	M10X1.50
10"	1.38 (35.1)	1.25 (31.8)	2.25 (57.2)	8.25 (210)	5/8-11



Dimensions are for layout purposes only. for tolerances, contact Worcester Controls. Metric dimensions are converted from standard English.