

# M1/M2 Extra Limit Switches

FCD WCENIM2063-01 AQ (Part 16418)

## Installation Instructions for Series 75 Actuators

### Mounting

1. Remove cover of actuator to gain access to internals.
2. FOR 10-2375: Remove #4-40 slotted head screws, mount two spacers (6) and extra switch (1) on top of standard switch. Secure the switches with the same two #4-40 screws (2).

FOR 25/3075: Remove #4-40 slotted head screws, mount two spacers (6) and extra switch (1) on top of standard switch. Secure switches with longer screws provided in limit switch kit, making sure to keep spacers (5) in place under standard switch.

3. Slip extra cam (3) onto actuator output shaft and position it so that cam set screw faces terminal strip when cam is in contact with limit switch to give desired function. Align cam with switch lever. Cam lobe must approach switch lever from lever pivot end and not from free end. See top view below.

### Setting

1. Bring actuator into position desired to actuate extra switch. Turn extra cam in direction of normal travel until switch just throws.
2. Advance cam in same direction by  $1\frac{3}{4}$  and secure cam by tightening the set screw (4).

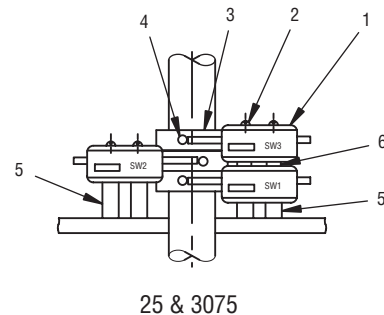
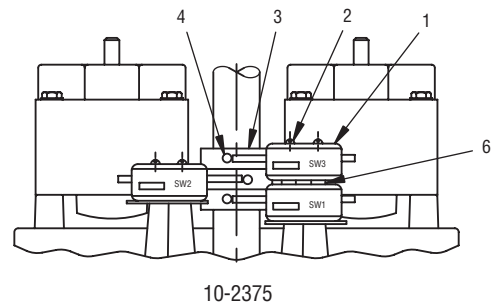
To add a fourth switch (not shown), add the spacers and switch to the one remaining position. Add the fourth cam (not shown) and position it as described in paragraph 3 above. Follow setting instructions above.

### Wiring

Refer to wiring diagrams in this instruction sheet for making electrical connections. A wiring label is also included with kit, which is to be attached to inside of actuator cover.

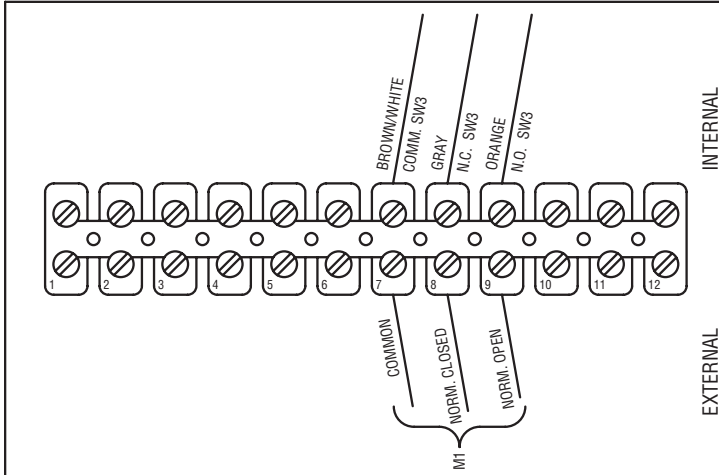
### Notes

All wiring to terminal strip should be inserted only to midpoint of terminal strip. Terminal strip space is limited. If necessary, M1/M2 switch wiring can be tagged and spliced to external wiring. Tags should indicate common, N.O. and N.C. wire connections.



Worcester Actuation Systems

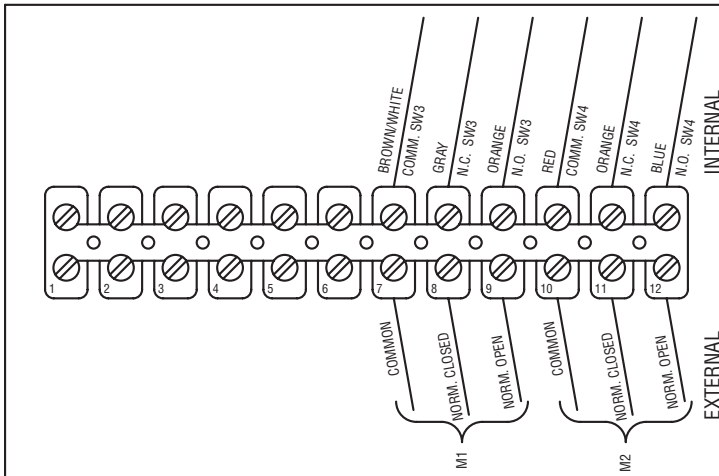
Wiring For 10-30 75 M1 Optio



FACING TERMINAL STRIP, SW1,3 ARE ON RIGHT SIDE;  
FACING TERMINAL STRIP, SW2,4 ARE ON LEFT SIDE.

(One Extra Limit Switch)

Wiring For 10-30 75 M2 Optio



FACING TERMINAL STRIP, SW1,3 ARE ON RIGHT SIDE;  
FACING TERMINAL STRIP, SW2,4 ARE ON LEFT SIDE.

(Two Extra Limit Switches)

Flowserve Corporation has established industry leadership in the design and manufacture of its products. When properly selected, this Flowserve product is designed to perform its intended function safely during its useful life. However, the purchaser or user of Flowserve products should be aware that Flowserve products might be used in numerous applications under a wide variety of industrial service conditions. Although Flowserve can (and often does) provide general guidelines, it cannot provide specific data and warnings for all possible applications. The purchaser/user must therefore assume the ultimate responsibility for the proper sizing and selection, installation, operation, and maintenance of Flowserve products. The purchaser/user should read and understand the Installation Operation Maintenance (IOM) instructions included with the product, and train its employees and contractors in the safe use of Flowserve products in connection with the specific application.

While the information and specifications contained in this literature are believed to be accurate, they are supplied for informative purposes only and should not be considered certified or as a guarantee of satisfactory results by reliance thereon. Nothing contained herein is to be construed as a warranty or guarantee, express or implied, regarding any matter with respect to this product. Because Flowserve is continually improving and upgrading its product design, the specifications, dimensions and information contained herein are subject to change without notice. Should any question arise concerning these provisions, the purchaser/user should contact Flowserve Corporation at any one of its worldwide operations or offices.

For more information about Flowserve Corporation, visit [www.flowserve.com](http://www.flowserve.com) or call USA 1-800-225-6989.

**FLOWSERVE CORPORATION**  
1978 Foreman Drive  
Cookeville, TN38501  
Phone 931-432-4021  
Fax 931-432-5518  
[www.flowserve.com](http://www.flowserve.com)



Worcester Actuation Systems

